



# Agency Master Plan Growth Zones Overview

**Forecasting Future Regional Water Needs**

October 2023

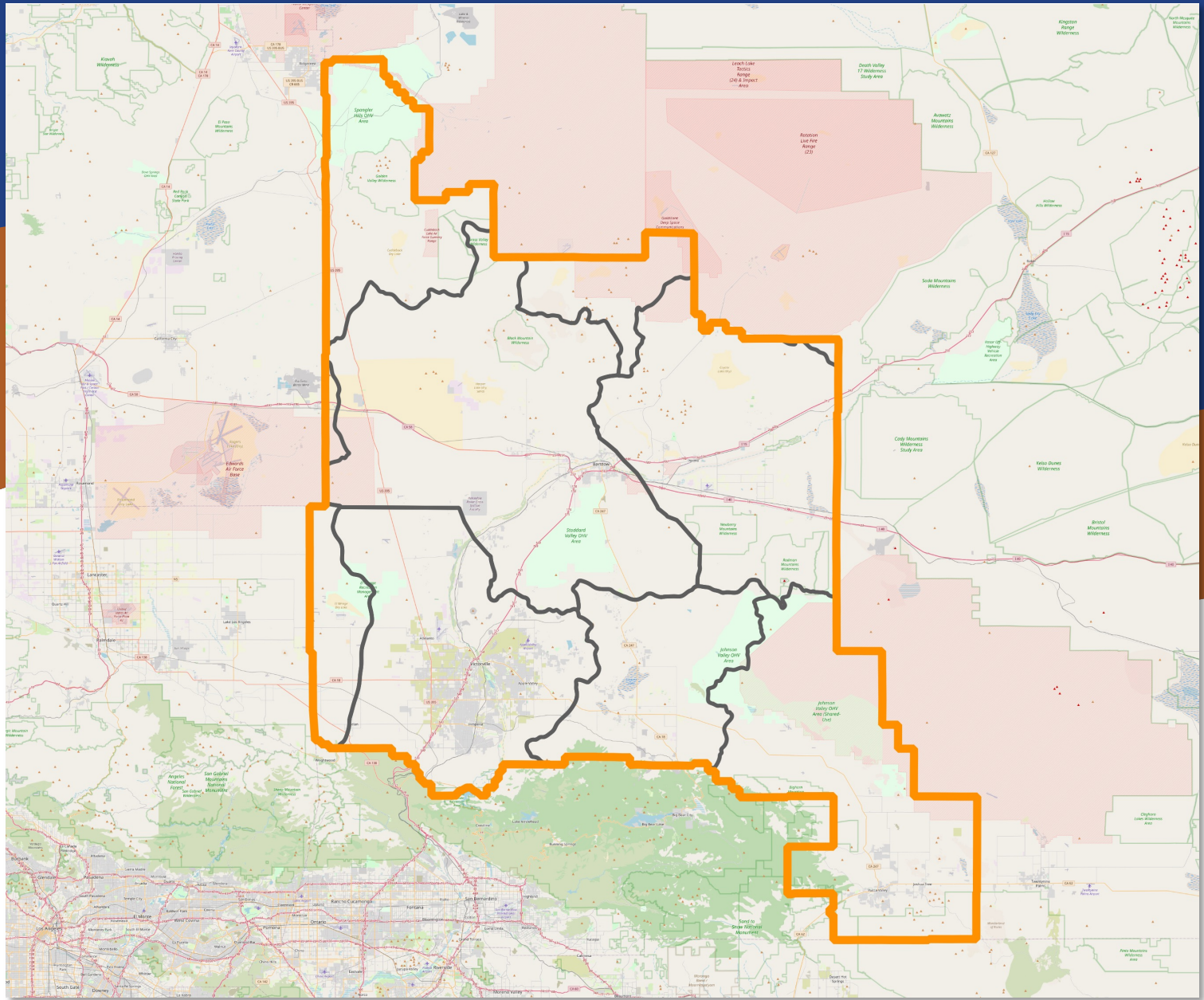


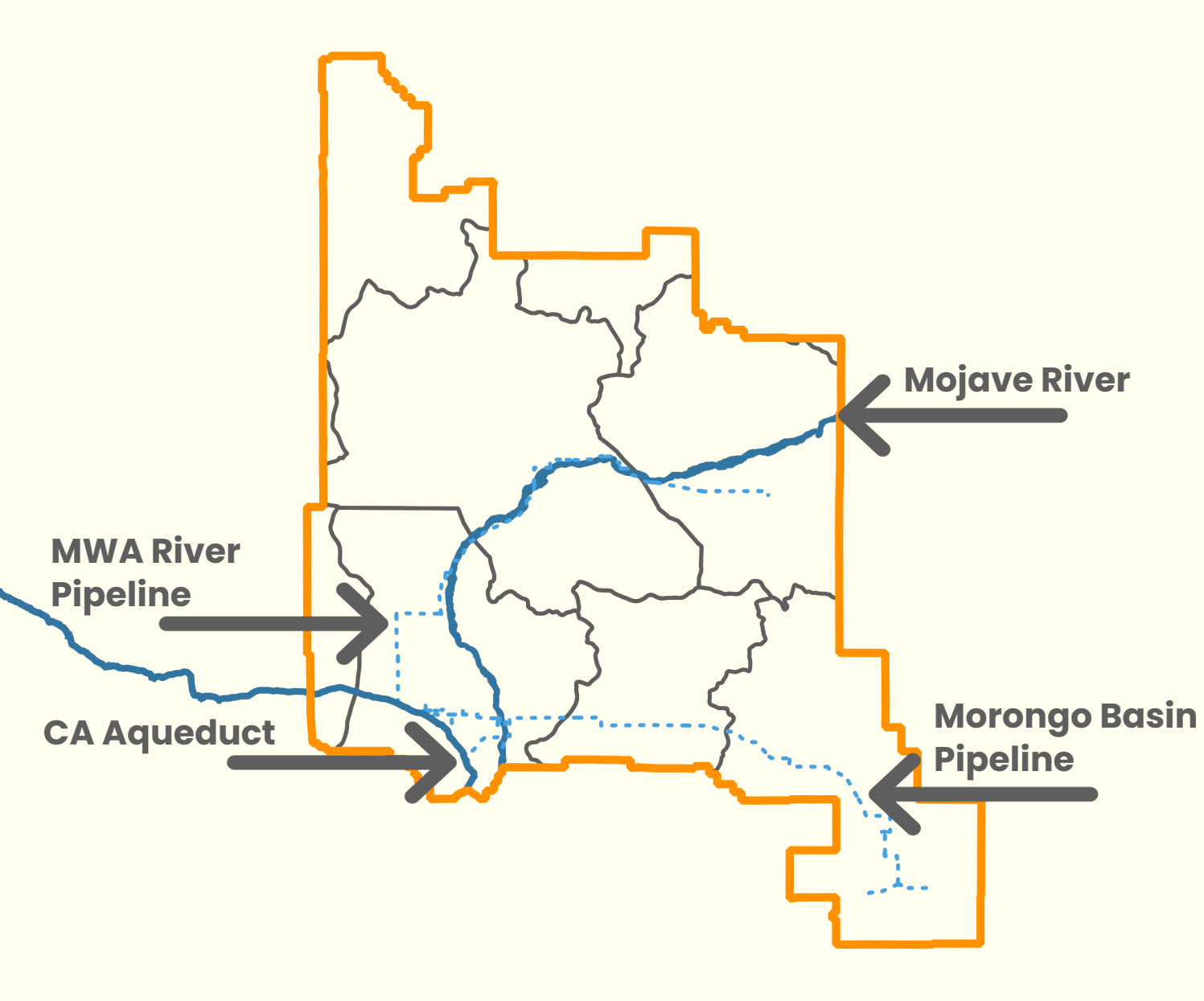


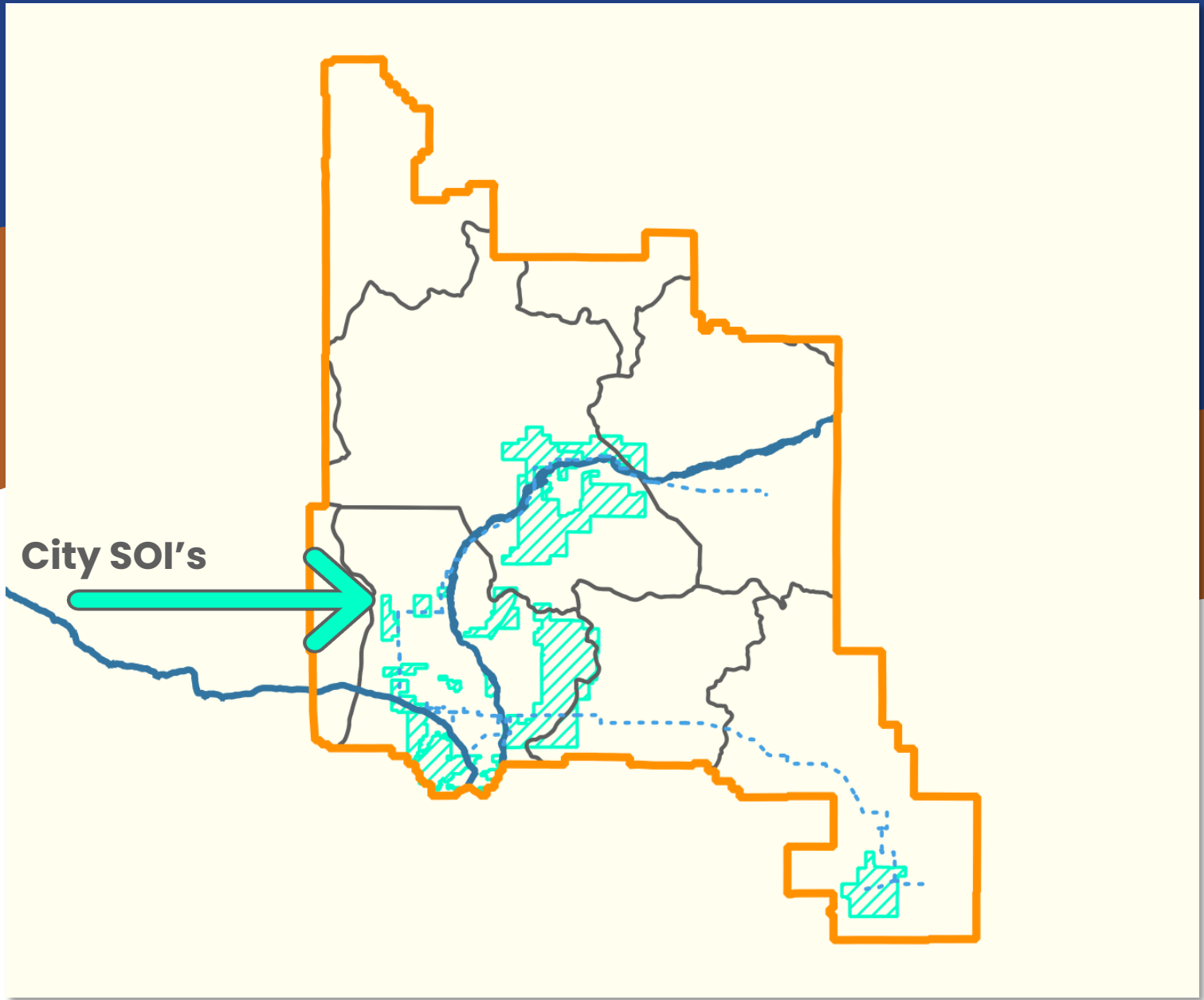
# GROWTH ZONES

Framing regional area designations as  
“Growth Zones”

- ✓ Illustrates **future water demand** by region
- ✓ Informs **Regional Solution Sets**
- ✓ Facilitates **stakeholder** engagement and input

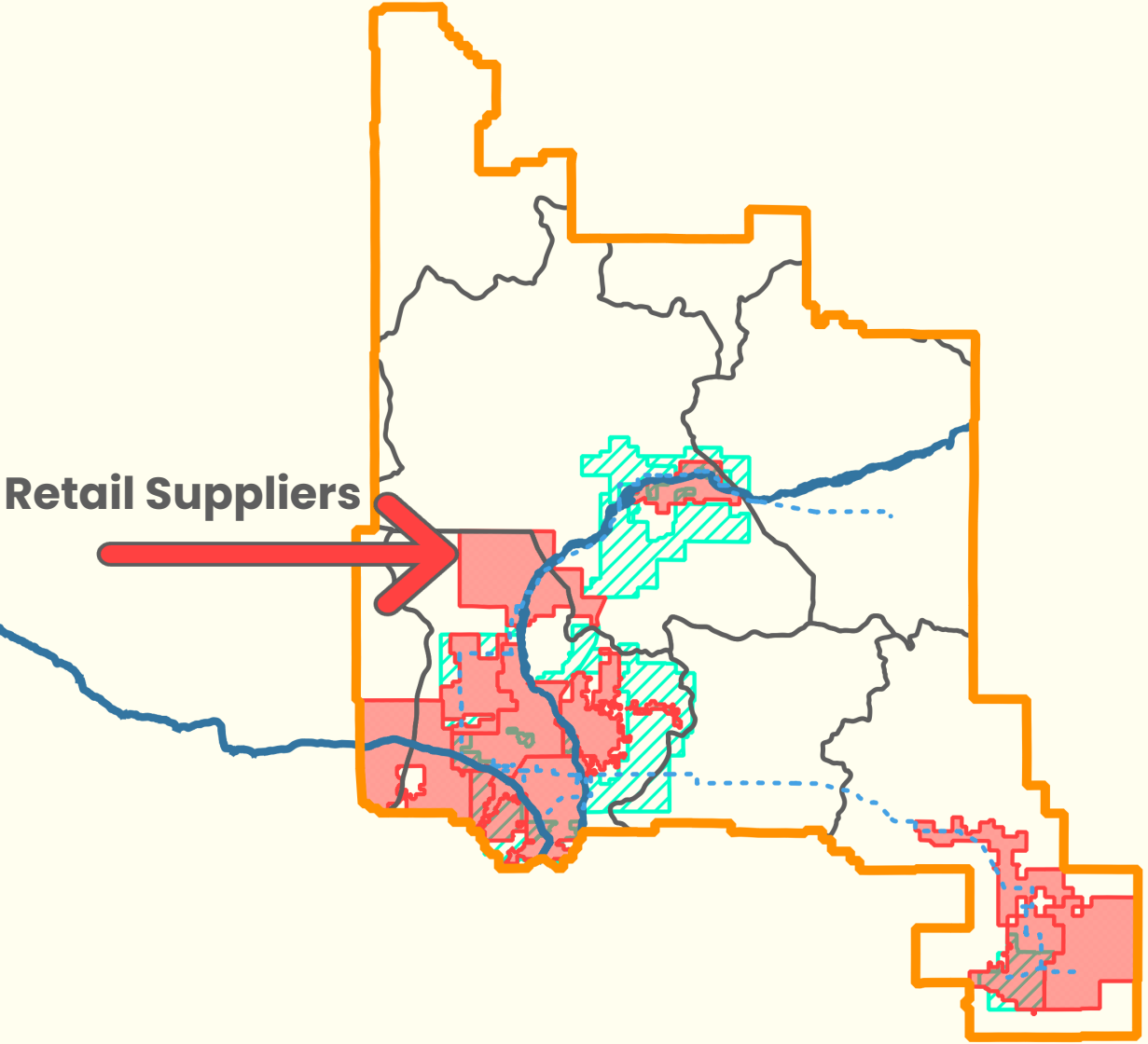


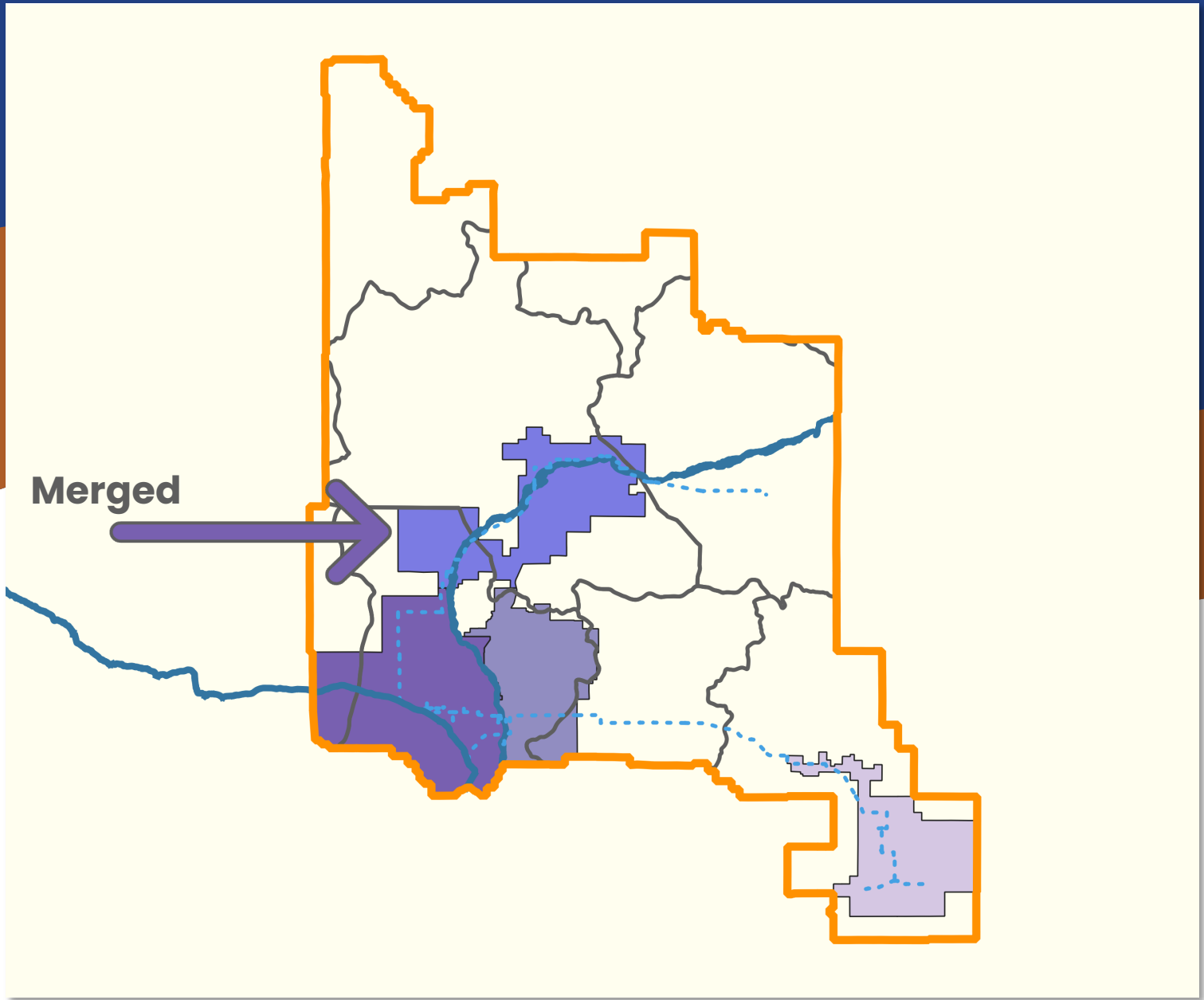




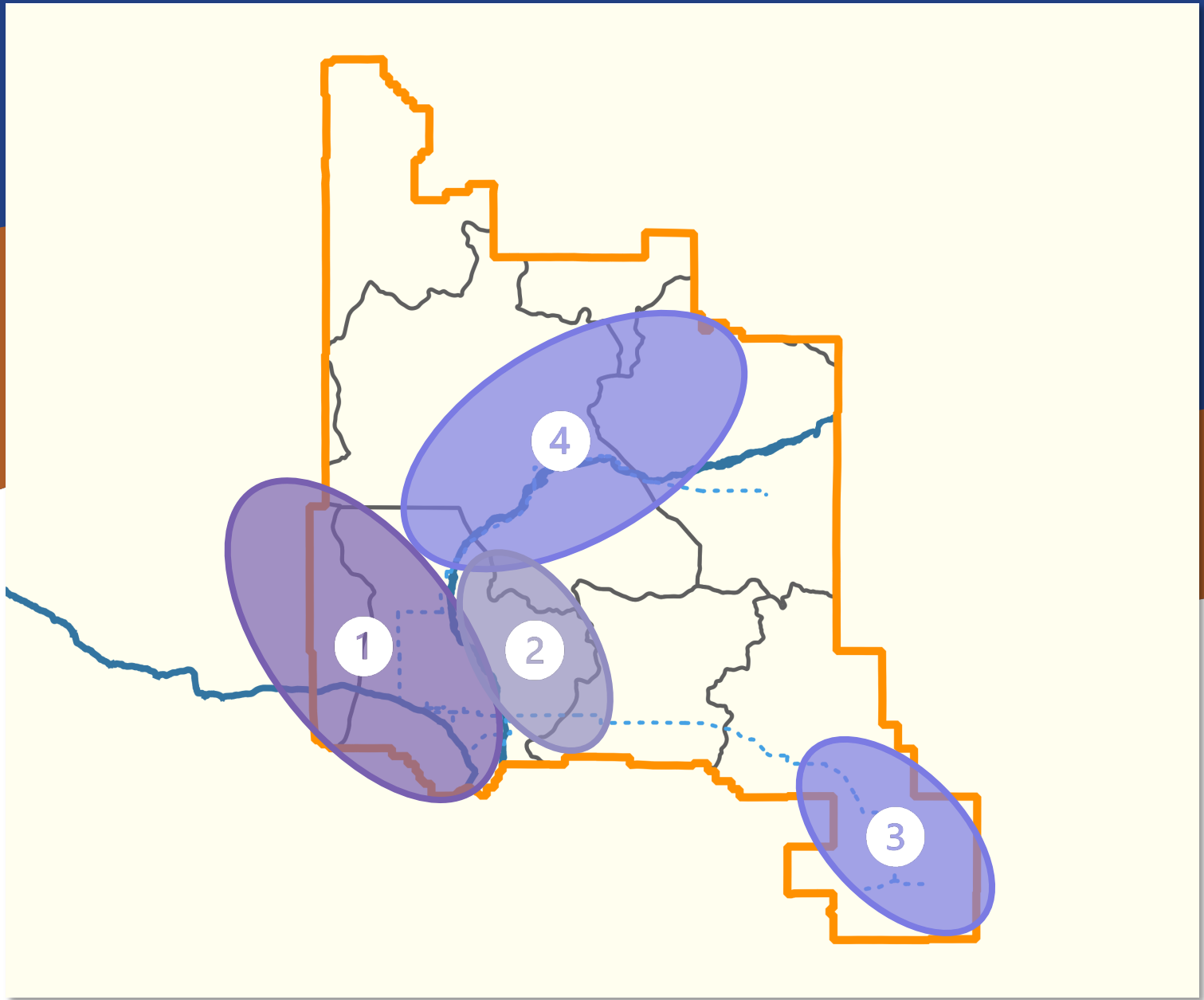
City SOI's

Retail Suppliers





Merged





# MWA Population and Demand Estimates (Service Area)

Mojave Water Agency		
	Current (2023)	Future (2065+)
Population	515,000	>700,000
Large Retailer Demand (AF)	76,000	>100,000
Other Demand (Ind, golf, rec)	37,000	40,000
Agricultural Demand	16,000*	16,000
Total Demand	129,000	>160,000

\* 2020 ag demand was 26,500





# GROWTH ZONE 1



Overlies the majority of the **Oeste** and **Alto** Subareas



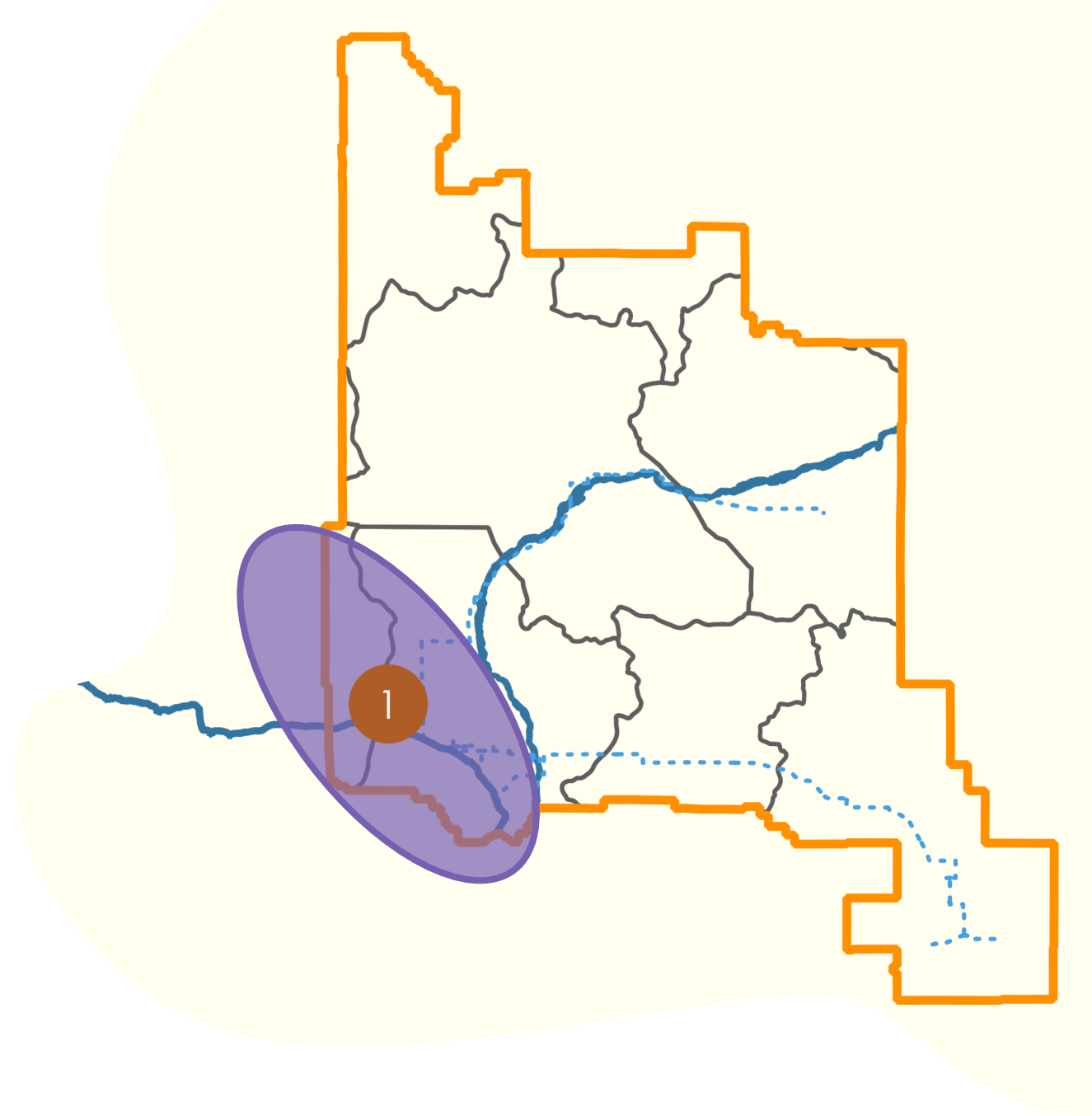
Includes **6 of 12** large retail suppliers



Population expected to increase by **150,000** people by 2065



Demand expected to increase by **>20,000 AF** by 2065





## GROWTH ZONE 2



Overlies the majority of the **Alto** and **Este** Subareas



Includes **1\* of 12** large retail suppliers



Population expected to increase by **24,000** people by 2065



Demand expected to increase by **>3,000** AF by 2065





# GROWTH ZONE 3



Overlies the majority of the **Morongo** Subareas



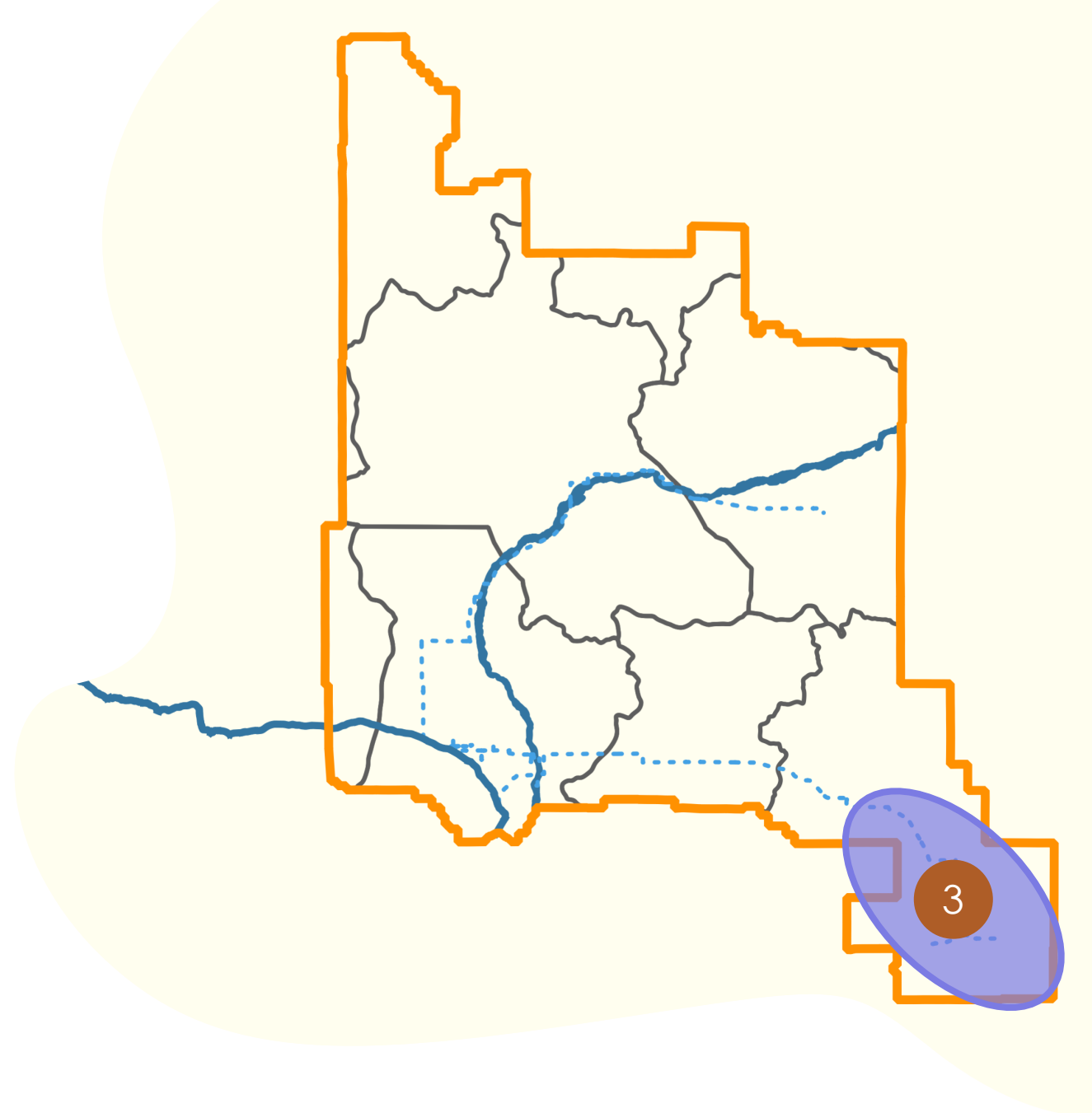
Includes **3 of 12** large retail suppliers



Population expected to increase by **6,000** people by 2065



Demand expected to increase by **>1,000** AF by 2065





# GROWTH ZONE 4



Overlies the **Centro, Baja**, and a portion of the **Alto** Subareas



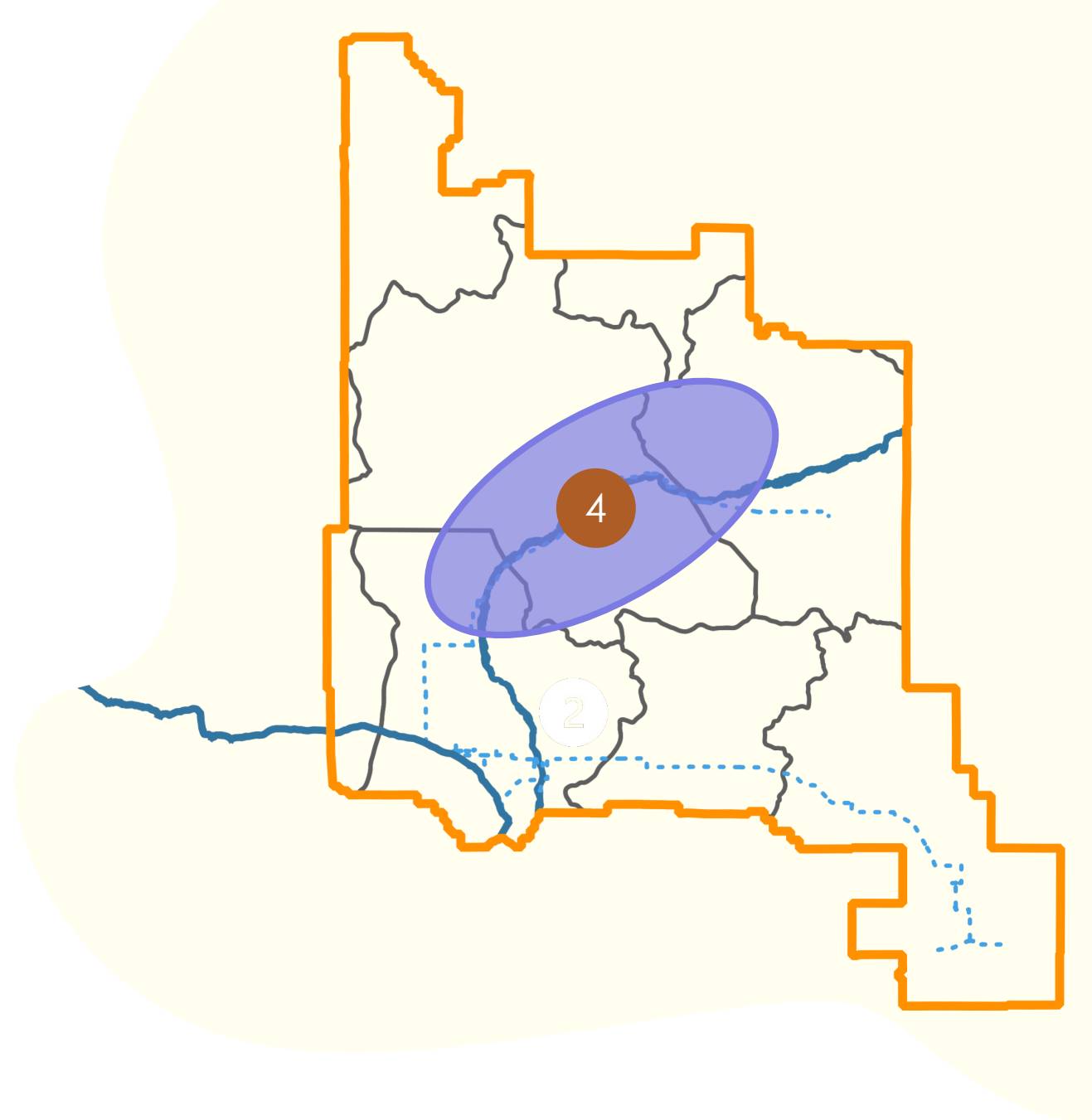
Includes **2 of 12** large retail suppliers



Population expected to increase by **20,000–30,000** people by 2065 (**major changes**)



Demand expected to increase by **>3,000** AF by 2065





## Resources & Links

### More info:

[mojavewater.org/masterplan](http://mojavewater.org/masterplan)

### Questions, comments and input:

[masterplan@mojavewater.org](mailto:masterplan@mojavewater.org)

